

WB MADHYAMIK HISTORY



Chapter 6

Peasant, working class and Left Movement in 20th century

Presented by **Md Shahbaj Alam**

WBBSE.RAMADANTUTORIAL.COM

Contents

RAMADAN TUTORIAL

01 1 Marks

02 2 Marks

03 4/8 marks

04 Previous Year Solve

Your Dear to The FUTURE...



COURSE CHARGES

**NOTES AND
VIDEO LECTURE
@ 99 ONLY**

**NOTES ONLY
@ 49 ONLY**



Get in Touch

Ramadan Tutorial -WBBSE is a dedicated website created for all WB Madhyamik candidates. Here you can get PDF notes, video courses, suggestion and many other study material to support your studies.

[@ramadantutorial](#)

wbbse.ramadantutorial.com

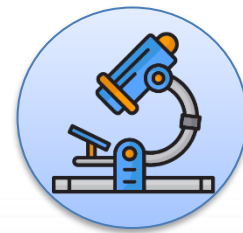
contact@ramadantutorial.com

9232370708

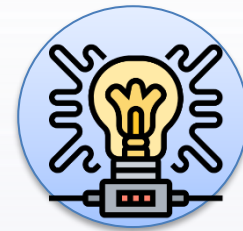
What We Offer



Madhyamik Math



Madhyamik Life Science



Madhyamik Physical Science



Madhyamik Geography



Madhyamik History



QUESTION: What was the role of workers in Civil Disobedience Movement?

Working Class Movement in the period of Civil Disobedience Movement:

The participation of workers was seen only during the **Dandi March of 1930**. On **April 6, 1930**, by making salt **illegally in Dandi**, Mahatma Gandhi broke the salt law and laid the foundation of the **Civil Disobedience Movement**. After this the movement spread widely throughout the country. Workers in Northeast India refused to work in salt factories. The main center of this movement in Bombay was '**Dharasana**'. When Gandhiji announced to speed up the movement that he would break the salt law by attacking the salt factory in Dharasna, a large number of workers along with common people participated in it. By this time the nature of the workers' revolt had become communist. He participated openly in the Civil Disobedience Movement, but some leaders of the Congress tried to keep the working class of India deprived of leadership. During the Civil Disobedience Movement, the political consciousness of the labor movement increased. The growing political consciousness of the working class movement meant growing political differences.

Due to these differences the labor movement could not keep itself united at this time. During the Civil Disobedience period, the British government intensified its repression cycle. The government repression of 1933-34 inspired the working class to establish unity again. The result of this was that in 1935, the ATC Congress and the Lal Trade Union Congress again united. But still it is believed that the Provincial Congress government was full of **anti-labour ideology**. She was not sympathetic to the workers. The Congress was under the influence of the capitalists and it wanted to remove the influence of the communists over the workers. For this purpose he also founded **Hindustan Mazdoor Sabha**.

Your Door to The FUTURE...



**Thank you
Watching!**



Get in Touch

Ramadan Tutorial -WBBSE is a dedicated website created for all WB Madhyamik candidates. Here you can get PDF notes, video courses, suggestion and many other study material to support your studies.

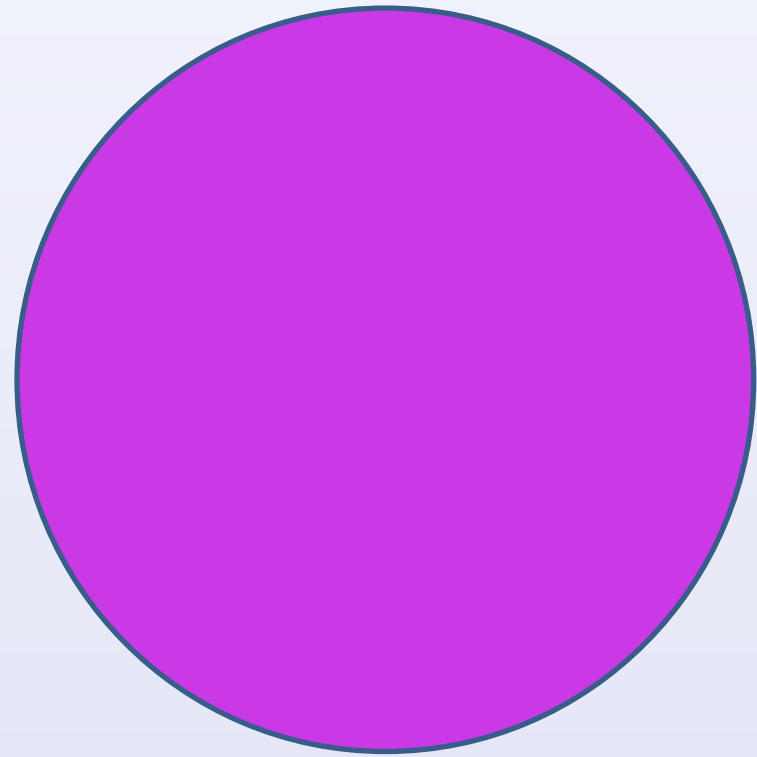
[@ramadantutorial](#)

wbbse.ramadantutorial.com

contact@ramadantutorial.com

9232370708

Subscribe Now!!!



Watch these

